



# PICKAWAY SOIL & WATER CONSERVATION DISTRICT

## CONSERVATION NEWS

Volume 80, Issue 2

Conservation News — Published Quarterly

April 2023

Pickaway Soil & Water Conservation District, 110 Island Road, Suite D, Circleville, Ohio 43113

### Upcoming Events

April 29  
Health & Safety Day  
YMCA & Heritage Hall  
10 am - 2 pm

April 30 - May 6  
Stewardship Week  
Poster Winners at Library

May 16  
Board Meeting  
8:00 am

May 29  
Memorial Day  
Office Closed

June 13  
Board Meeting  
8:00 am

June 18 - 24  
Pickaway County Fair

June 28  
Soils Program for Kids  
Park District - Canal Park

June 30  
EE Camp Registrations Due

July 4  
Independence Day  
Office Closed

July 14  
Friday in the Park  
10:30 a.m. to Noon

July 18  
Board Meeting  
8:00 am

## Tree Sale & Fish Sale

We have been very busy this spring with our annual tree sale and fish sale. Thank you for your support in these sales!

For the 2023 Tree Sale, 122 customers purchased 338 bundles of trees (7,403 trees) and 73 other items.

For the Fish Sale, 41 customers purchased 24,487 fish and 13 other items.



## Newsletter List

Please Note: We have grown our newsletter list a great deal over the past few years, and it is starting to become very expensive to mail to everyone on the mailing list. This spring and summer we are going to start combing through our mailing list and our e-news/email list to see how many duplicates we have. If someone is receiving our newsletter by both mail and email, we may only send future newsletters to you by email to help keep costs down and conserve paper - we are a conservation district, after all! If this is an issue for you, please let us know. We love sharing our news with you!

# Are You Interested in Becoming a Pickaway SWCD Supervisor?

A district supervisor is a local board member, elected from a non-partisan slate of general election, to assess local conservation needs and to develop conservation programs to address these needs. The district is funded by the Ohio Department of Agriculture, the Division of Soil and Water Conservation and the General Assembly, and the County Commissioners.

Supervisors serve three year terms on the board. There is no limit on the number of terms a supervisor can serve, but when their three year term ends they must re-run if they wish to serve another term on the board. Supervisors receive no compensation; they are reimbursed for travel to meetings, registration, meals, and other associated expenses when conducting work of the district.

## Primary Duties and Responsibilities

- Attend monthly district meetings (3rd Tuesday of the month, currently meeting at 8:00 am in the morning).
- Participate on district committees and in work groups.
- Be willing to represent the citizens of Pickaway County in regard to conservation issues.
- Be willing to stay informed and inform others about conservation issues.
- Be willing to learn.
- Be willing to participate in statewide meetings and workshops on conservation issues.
- Participate in district policy and program development.
  - a. Prepare strategic and annual plans of work.
  - b. Establish and implement district policies regarding natural resource conservation issues as well as personnel and office matters.
  - c. Develop and/or implement conservation programs (educational and/or technical) to meet the needs of the district.
- Provide financial direction.
  - a. Be responsible for the proper expenditure and management of public funds.
  - b. Review and approve annual budget and financial statement.
  - c. Approve monthly treasurer reports.
- Participate in public and community relations' activities/programs.
- Participate in personnel management.
  - a. Provide guidance and direction to staff and maintain fair and equitable personnel policies.
  - b. Maintain an open working relationship between staff and board members.
  - c. Serve on personnel committee and participate in all aspects of personnel management to include hiring, personnel reviews, etc.

If you are interested in running for a 3-year term as a Pickaway SWCD board member, please contact the District office (740-477-1693), or view the website ([pickawayswcd.org](http://pickawayswcd.org)) for details and info. Thank you!

Our upcoming supervisor election will take place this summer. The official dates and voting location(s) will be posted to the Pickaway SWCD website soon.



# Affiliate Memberships for 2023

**THANK YOU** to everyone who signed up to be an affiliate member this year! We appreciate all of your support to our office and dedication to conservation and education. We couldn't do all we do without your help. You are very much appreciated and truly make a difference! While we renew all memberships the beginning of each calendar year, anyone is welcome to send in a form at any time during the year.

Some of our many education and outreach endeavors include graduating senior scholarships, school programs, Experience Earth Camps, the Junior Conservationist Program, the Pickaway County Fair, our farm-to-table book project, tree saplings to students, and many other community activities as well. **THANK YOU** for helping us with these important and impactful initiatives!

This year's affiliate members are:

### **Corporate Members (\$250)**

- Columbus Turf Nursery, LTD.
- Elite Construction Design Management, LLC
- Richard & Judy Clifton
- Pickaway County Farm Bureau
- Honeyrun Farm
- Lightning Tree Barn, LLC
- Randy & Cindy Metzger
- Ruff Agri-Services LLC
- The Savings Bank
- Vickers Farms
- Pickaway Farms - Jay & Marci Wippel

### **Soil and Water Protector (\$30)**

- Anonymous (2)
- Thomas & Scarlett Ebenhack
- John & Kathy Ellis
- Doug & Vicki Kohli
- Penelope LaRock
- Darren & Susan Metzger
- Todd Millard
- Mark & Toni Schein
- Melanie Self

### **Steward of the Land (\$100)**

- Tim & Amy Colburn
- Crawford Apiaries
- Dunlap Farms-John & Susan Dunlap
- John & Curtis Drummond
- Hartsock Ag
- Laurina Harper
- Musselman Farms
- Pickaway County Banking Center
- Clyde Ohnewehr
- Wiseheart Farms

### **Future Conservationist (Students) (\$10)**

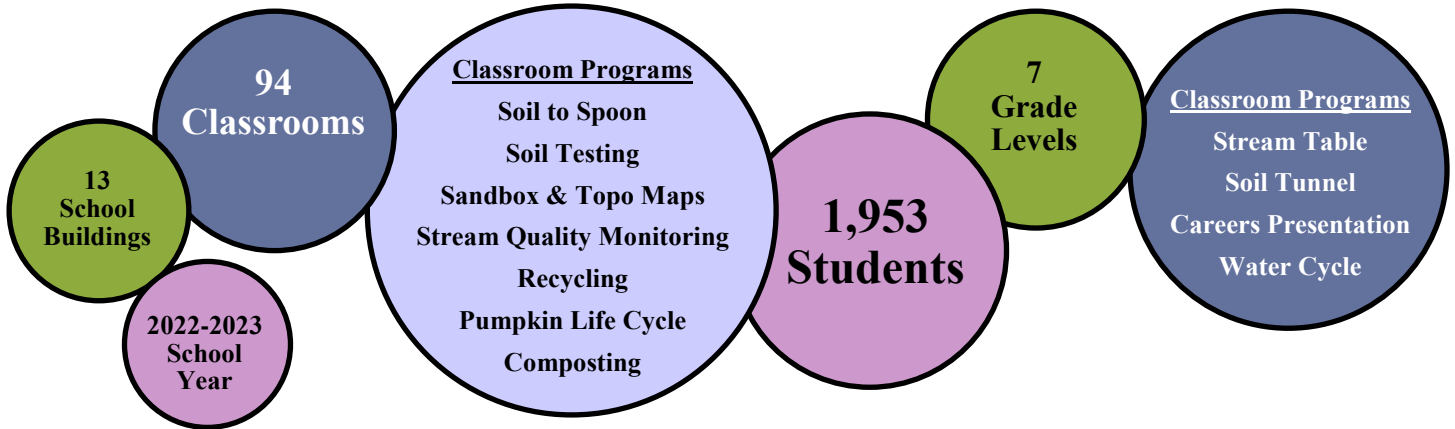
- Austin Clark
- Trey Dille
- Trenton Dille
- Mackenzie Dille
- Lane Musselman
- Levi Musselman
- Reese Moehl
- Adrian Moehl
- Zac Scott
- Zoe Scott
- Clara Wilson
- Maggie Wilson
- Mark Wilson

*Thank you*



# Education Update

It's been a busy school year for programs so far, and we have A LOT of school programs scheduled for April and May that we're looking forward to. In addition to Farm-to-Table books for 1st grade, Ag Day for 4th grade, Trees for 5th grade, and the Poster Contest (Check out our website and Facebook soon to see this year's winners!), we've also spent a lot of time in classrooms. Some classroom program data to share from this school year so far is:



# Adult Workshops

We've spent a fair amount of time planning and hosting adult workshops this year. All have gone well and spots have filled up quickly! Here's a little overview of these workshops in case you may be interested in attending one of these in the future.

## There's a *MAP* for That

Our map workshop took place in March. We learned how to use the GIS and Web Soil Survey sites to look up property information such as soil types, drainage details, parcels, and more. Pickaway SWCD Technician Brad Hughes and Pickaway Co. GIS Coordinator Jason Gillow were our resident experts. The workshop was hosted at the Pickaway County Library.



## Rain Barrel Workshop

We are hosting a rain barrel workshop with the Pickaway County Park District in May. We had 30 rain barrels available for this workshop, and we filled up a month in advance. Attendees will learn about water conservation, the benefits of rain barrels, how to set up and care for a rain barrel, and will actually get to help put their rain barrel together at the workshop. We will also have dinner at the event. We've had so much interest that we plan to offer another rain barrel workshop next year!



# Ohio Native Plant Month



April is Ohio Native Plant Month! Be on the look out for the Green “O” with the Great White Trillium (Ohio’s State Wildflower). This logo represents Native Plant events in Ohio. Check out our Facebook page throughout the month to see posts on native Ohio plants!

In Ohio, we have over 1000 native trees, shrubs, perennials, vines and grasses that are important to our pollinators, birds, insects, and other wildlife, and humans too! They are part of an intricate, balanced web that helps to filter and clean our drinking water, remove contaminants from the air we breathe, cool our planet, and feed the bees that pollinate most of our food crops. At the very core of this elaborate system are our native plants.

## Upcoming Opportunities

### Jr. Conservationist Program

The Jr. Conservationist Program is designed to encourage kids to have fun learning outside over the summer months. Hosted by Pickaway SWCD, the Pickaway County Park District and RPHF Solid Waste District. Register to participate and be eligible for a free hat and button if youth complete the required number of activities from each topic category: Animals, Plants, Soil, Water, Exploration and Community. Program details and the activity list can be found on our website: [www.pickawayswcd.org/jr-conservationist-program](http://www.pickawayswcd.org/jr-conservationist-program).

### Pickaway County Fair

Come find us at the fair! We plan to have a display and our augmented reality sandbox set up again this year at the fair. The dates for fair are June 18-24, 2023.

### Experience Earth Camps

This summer we are offering a three-day day camp to incoming 3rd, 4th, and 5th grade students July 18-20, and also a one-day Jr. Camp to incoming 1st and 2nd grade students July 21. Both will take place at Cooks Creek on State Route 23 just North of Circleville. We will again be partnering with the Pickaway County Park District and RPHF Solid Waste District for these camps. Registration forms and camp details are posted on the website: [www.pickawayswcd.org/experience-earth-camps](http://www.pickawayswcd.org/experience-earth-camps)

We will cap registration off at 60 campers for the 3-day EE Camp and at 30 campers for the 1-day Jr. Camp. All forms and payment are due to the office by June 30.

# Technical Corner

Do you have gully erosion on your farm? There are 3 ways to receive help:

## 1. CRP

New Conservation Reserve Program waterway cost-share:

- 50% cost-share
- 40% incentive paid at completion of practice construction
- 10% incentive at year 5 of 10-year contract
- 100% cost-share based on state-average cost list that has been updated along with soil rental rates!

To check eligibility (cropping history 4 years in 2012-2017, not drawn out on FSA map, etc.), contact Farm Service Agency 740-477-1691.

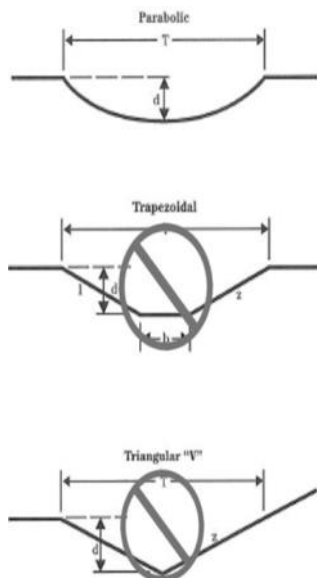


## 2. EQIP

If not eligible for CRP, the alternative program is the Environmental Quality Incentives Program (EQIP). EQIP is a competitive program that applications are scored against all of the other Pickaway County applications received. Once they are all ranked, the top scoring ones get funding. Funding is made available usually annually at minimum. Also be aware that one waterway on an application may not be enough points to obtain funding. EQIP cost-shares approximately 50% of eligible components designed based on a state average cost list. To apply for EQIP, contact NRCS District Conservationist Justin Armintrout at 740-477-1961.

## 3. No Funding

Even if you don't get into a program and/or decide to build the waterway on your own, we can give you sizing or design a plan (if land is agriculture) and help your contractor with layout, etc. Call us at 740-477-1693.



SEED MUST BE CERTIFIED BY THE OHIO DEPARTMENT OF AGRICULTURE

ALL DISTURBED AREAS SHALL BE SEEDED AND MULCHED ACCORDING TO NRCS SPECIFICATIONS AT THE FOLLOWING RATES PER ACRE BEFORE CONSTRUCTION APPROVAL CAN BE MADE.

SEEDING				
MATERIALS	TYPE	RATE (Pure Live Seed)	% of Mix	TOTAL LBS.
Seed Mixture	KY 31 Tall Fescue	40 Lb. / Acre	47	
	Kentucky Bluegrass	20 Lb. / Acre	23	
Fertilizer	Perennial Ryegrass	25 Lb. / Acre	30	
	15-15-15 or Equivalent	100 Lb. / Acre		
Lime	Ag Lime	As Req'd by Soil Test (or) 5000 Lb. / Acre		
	Straw Mulch	5000 Lb. / Acre		
Mulch	Erosion Control Blanket (ECB)	Width of Waterway		

The seeding rates listed above are standard seeding rates. The applicable seeding period for these rates is March 15 to May 31 and August 1 to September 15.

The dormant seeding period is December 1 to March 14.

\*\* Seeding may be considered from June 1 thru July 31 if the area is mulched with 95-100% cover (approx. 3 tons/acre of straw).

\*\* Seeding may also be considered between September 16 and October 15; use seeding and mulching rates listed in above table.

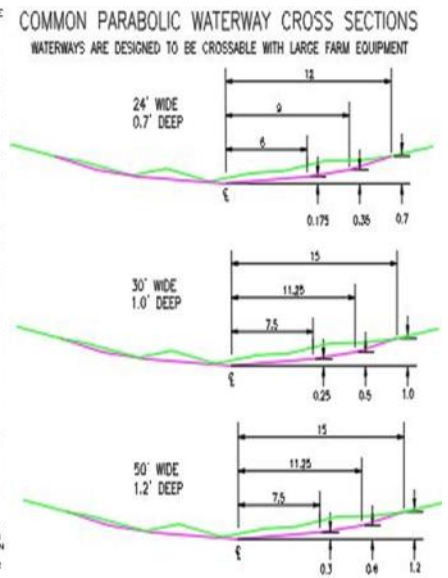
\*\* Both of these periods are considered "outside the seeding window" and will need to be evaluated for adequate establishment prior to final approval.

Seeding between October 15 and December 1 is not recommended.

Prepare a firm seedbed with a disk or similar equipment. Work seedbed to a depth of three (3) inches on all areas accessible to equipment. Other areas not accessible to equipment shall be worked by hand tools to a depth of one (1) inch. Lime and fertilizer shall be incorporated into the seed bed prior to seeding.

Calibrate drill and seed 1/4 to 1/2 inch deep for cool season grasses and legumes. When broadcast seeding method is used, outpass or light-draw/narrow to achieve seed coverage and seed to soil contact.

\* EROSION CONTROL BLANKET DOWN THE CENTER OF THE WATERWAY IS AN AVAILABLE OPTION. MAKE SURE ECB IS LISTED AS A COST-SHARE ITEM ON YOUR CRP CONTRACT IF YOU WISH TO USE IT. IF ECB IS NOT USED FOR THE ENTIRE WIDTH OF THE WATERWAY, ANCHORED STRAW IS REQUIRED FOR THE REMAINING WIDTH. DOUBLE NET ECB IS RECOMMENDED.



PICKAWAY SWCD  
110 ISLAND ROAD, SUITE D  
CIRCLEVILLE, OHIO 43113

NONPROFIT ORG  
U.S. POSTAGE PAID  
CIRCLEVILLE, OHIO  
PERMIT NO. 199

Check out our website at [www.pickawayswcd.org](http://www.pickawayswcd.org)  
for resources such as:

- Office News and Events
- Rental Equipment
- Residential Resources
- Education Program Info
- Scholarships
- Newsletters
- Tree and Fish Sales
- Contractor and Vendor Lists
- Poster Contest
- Affiliate Members
- Lending Library Book List
- Photo Gallery!



Follow us on Facebook!  
@ Pickaway Soil and Water Conservation District

## 2022 ANNUAL REPORT

Posted to website:

[www.pickawayswcd.org/annual-reports](http://www.pickawayswcd.org/annual-reports)

## IN THE JULY NEWSLETTER:

- ◆ Details for the 2023 Annual Meeting and Banquet
- ◆ Details and dates for the 2023 Supervisor Election & Voting

### Pickaway Soil & Water Conservation District

Phone: 740-477-1693 Website: [pickawayswcd.org](http://pickawayswcd.org)



#### Office Staff

Tawn Seimer, District Administrator  
Katerina Sharp, Education/Outreach Coordinator  
Brad Hughes, District Technician  
Justin Armintrout, District Conservationist  
Matt Mauzy, NRCS Civil Engineering Technician  
Eliezer Ortiz-Barbosa, Resource Conservationist  
Garrett Caudill, Pheasants Forever, Farm Bill Biologist

#### Affiliate Members 2023

##### **Corporate Members**

Columbus Turf Nursery, LTD., Elite Construction Design Management, LLC, Richard & Judy Clifton, Pickaway County Farm Bureau, Honeyrun Farm, Lightning Tree Barn, LLC, Randy & Cindy Metzger, Ruff Agri-Services LLC, The Savings Bank, Vickers Farms, Pickaway Farms - Jay & Marci Wippel

##### **Steward of the Land**

Tim & Amy Colburn, Crawford Apiaries, Dunlap Farms-John & Susan Dunlap, John & Curtis Drummond, Hartsock Ag, Laurina Harper, Musselman Farms, Pickaway County Banking Center, Clyde Ohnewehr, Wiseheart Farms

##### **Soil and Water Protector**

Anonymous (2), Thomas & Scarlett Ebenhack, John & Kathy Ellis, Doug & Vicki Kohli, Penelope LaRock, Darren & Susan Metzger, Todd Millard, Mark & Toni Schein, Melanie Self

##### **Future Conservationist (Students)**

Austin Clark, Trey & Trenton & Mackenzie Dille, Lane & Levi Musselman, Reese & Adrian Moehl, Zac & Zoe Scott, Clara & Maggie & Mark Wilson

#### PSWCD Board

Matt Anderson, Vice-President  
Bill Black, Treasurer & Fiscal Agent  
Jonathan Lohstroh, Member  
Dewey Mann, President  
Brian Reid, Secretary

#### Pickaway County Agencies-Phone Numbers

Farm Service Agency	740-477-1691	OSU Extension	740-474-7534
Pickaway County Commissioners	740-474-6093	Pickaway County Engineer	740-474-3360
Adam Komar -ODNR Service Forester	740-961-0194	Division 1 ODNR	614-644-3925